

# BROOKVENT

---

## WINDOW VENTILATION

*High quality, customisable,  
Surface Mounted and Glazed In options*



[brookvent.co.uk](http://brookvent.co.uk)

# BROOKVENT

## *Who we are*

Brookvent are leading UK manufacturers of Energy Saving Ventilation Systems, ranging from high performing Window Vents to efficient Heat Recovery Ventilation systems.

Day to day we work with key specifiers and companies within the construction sector, helping them to choose the correct ventilation solution to suit the needs of their project.

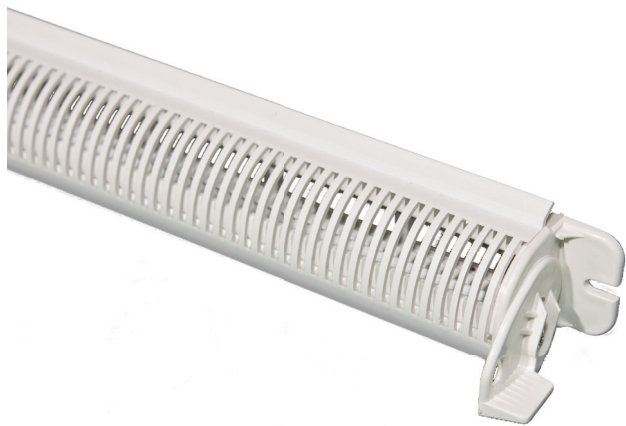
## *Window Ventilation*

Brookvent manufacture a comprehensive range of extruded aluminium and ABS Window Vent's, designed to provide a robust solution to domestic/residential ventilation. Our range is well known within the industry for its quality in terms of performance, durability, and finish.

Much of the range is manufactured to customers bespoke requirements and can be supplied in a wide variety of colour and control options to suit the needs of a particular project. Our products are typically supplied 'made to measure'; however some variations can also be supplied in standard modular sizes as well as 'bar length' form, allowing the customer to cut and assemble as required.

## *Quality*

At Brookvent, every product we develop, and every service we provide is based upon delivering true value for money to our customers. We place special consideration upon the 'whole life cost' of our ventilation solutions. Brookvent proudly hold **ISO 9001** accreditation thanks to the implementation and consistent improvement of our quality management systems. These systems aim to ensure our consistent delivery of high levels of business performance and customer satisfaction. All of our products undergo rigorous quality and performance testing ensuring that our customers and end users alike receive a reliable product from a brand they can trust.



## Service

We pride ourselves on having a 'Can do' attitude. Our experienced technical sales and support teams are more than happy to help with any query, great or small, with an emphasis on first point of contact resolution. Put simply, we are prepared to stretch that extra mile for our customers!

We manufacture and supply directly from our specialist 75,000 ft<sup>2</sup> factory just outside Belfast, and are pleased to offer some of the most competitive lead times in the industry.

## Green Practice

At Brookvent we practice what we preach, and are committed to reducing our carbon footprint in whatever way we can. Sourcing sustainable materials and utilizing lean manufacturing techniques ensure our products are more environmentally friendly to manufacture as well as being easier to recycle.

Our **ISO 14001** environmental management systems accreditation is testament to our commitment to consistently improve our sustainable practices.

# airvent

## Surface Mounted Window Vents

SM Comparison Table	3-4
SM 1000	5-6
SM 1000+	7-8
SM 1200	9-10
SM 1200+	11-12
SM 1400	13-14
SM TIP VENT <sup>NEW</sup>	15-16
SM ACOUSTIC <sup>NEW</sup>	17-18
SM Gas Regulation Vent	19-20

# airvent

## Glazed In Window Vents

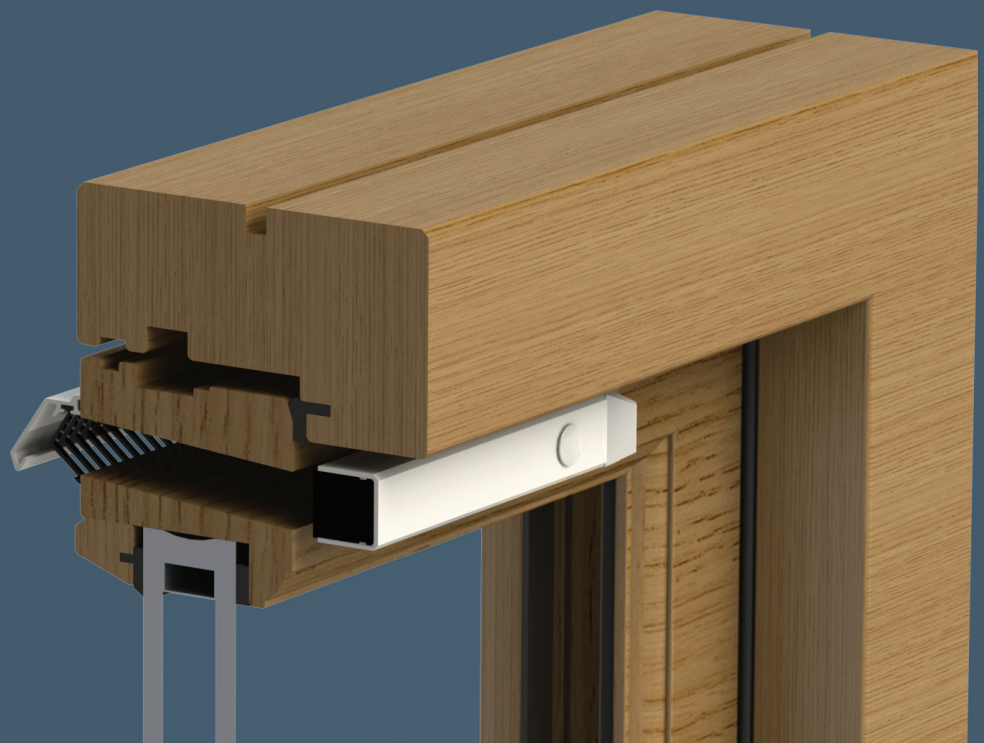
GI Comparison Table	21-22
DG 1500	23-24
DG Standard	25-26
Thermal Break	27-28
PD (Patio Door)	29-30
GI Gas Regulation Vent	31-32

**BROOKVENT**

# airvent

Surface Mounted Window Vents

Suitable for  
all types of  
window frame  
construction



## Product Comparison Table

	SM 1000	SM 1000+	SM 1200	SM 1200+	SM 1400	SM TIP VENT	SM ACOUSTIC
<b>Vent and Hood Material</b>	Aluminium	Aluminium	Aluminium	Aluminium	Aluminium	ABS	ABS
<b>Slot Height</b>	10mm	10mm	13mm	13mm	16mm	12mm	10mm
<b>Equivalent Area</b>	2500mm <sup>2</sup>	2500mm <sup>2</sup>	2500mm <sup>2</sup>	2500mm <sup>2</sup>	1575mm <sup>2</sup>	1250mm <sup>2</sup>	2600mm <sup>2</sup>
<b>Modular Sizes</b>	3000mm <sup>2</sup>	3000mm <sup>2</sup>	3000mm <sup>2</sup>	3000mm <sup>2</sup>	2200mm <sup>2</sup>	2700mm <sup>2</sup>	
<i>(See individual product pages for Geometric Area Modular Sizes)</i>	3500mm <sup>2</sup>	3500mm <sup>2</sup>	3500mm <sup>2</sup>	3500mm <sup>2</sup>	2825mm <sup>2</sup>		
	4000mm <sup>2</sup>	4000mm <sup>2</sup>	4000mm <sup>2</sup>	4000mm <sup>2</sup>	3450mm <sup>2</sup>		
	& Bespoke	& Bespoke	4500mm <sup>2</sup>	4500mm <sup>2</sup>	4075mm <sup>2</sup>		
			5000mm <sup>2</sup>	5000mm <sup>2</sup>	4700mm <sup>2</sup>		
			& Bespoke	& Bespoke	5325mm <sup>2</sup>		
					5950mm <sup>2</sup>		
					6575mm <sup>2</sup>		
					7200mm <sup>2</sup>		
					7825mm <sup>2</sup>		
					& Bespoke		
<b>Control</b>	Manual Knob	Rod (L or R)	Manual Knob	Rod (L or R)	Manual Knob or Rod	Manual Knob	Manual Knob
<b>Acoustics</b>	Open: 32 db Dnt Rw 29 db Dne W	Open: 32 db Dnt Rw 29 db Dne W	Open: 32 db Dnt Rw 30 db Dne W	Open: - 30 db Dne W	Open: - 32 db Dne W	Open: - 32 db Dne W	Open: - 40 db Dne W
	Closed: 43 db Dnt Rw 40 db Dne W	Closed: 43 db Dnt Rw 40 db Dne W	Closed: 43 db Dnt Rw 47 db Dne W	Closed: - 47 db Dne W	Closed: - 39 db Dne W	Closed: - 38 db Dne W	Closed: - 44 db Dne W
<b>Fixing Method</b>	Screw	Screw	Screw	Screw	Screw	Screw and/or Clip	Screw
<b>Standard Colours "Semi-gloss" (Bespoke also avail.)</b>	White (HIPCA, RAL 9910) Black (RAL 9005) Brown (RAL 8017) Oak (RAL 8003) - - - - Cream (RAL 9001) Mill -	White (HIPCA, RAL 9910) Black (RAL 9005) Brown (RAL 8017) Oak (RAL 8003) - - - - Cream (RAL 9001) Mill -	White (HIPCA, RAL 9910) Black (RAL 9005) Brown (RAL 8017) Oak (RAL 8003) - - - - Cream (RAL 9001) Mill -	White (HIPCA, RAL 9910) Black (RAL 9005) Brown (RAL 8017) Oak (RAL 8003) - - - - Cream (RAL 9001) Mill -	White (HIPCA, RAL 9910) - - - - - - - - Mill -	White - Black (RAL 9005) Brown (RAL 8017) Oak (RAL 8003) Anthracite (RAL 7016) - - Cream (RAL 9001) - Chartwell Green	White (RAL 9003) - - Brown (RAL 8017) Oak (RAL 8001) Anthracite (RAL 7016) Tele Grey (RAL 7047) - - -
<b>Gas Regulation Option</b>	Yes	No	Yes	No	No	No	No
<b>Bar Length Supply</b>	Yes	No	Yes	No	Yes	No	No
<b>Guarantee</b>	10 Years	10 Years	10 Years	10 Years	10 Years	2 Years	5 Years
<b>Page Number</b>	5-6, 20	7-8	9-10, 20	11-12	13-14	15-16	17-18

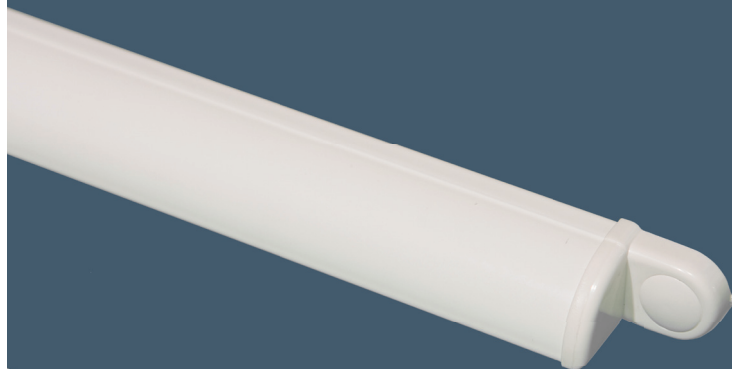
**BROOKVENT**

**airvent**

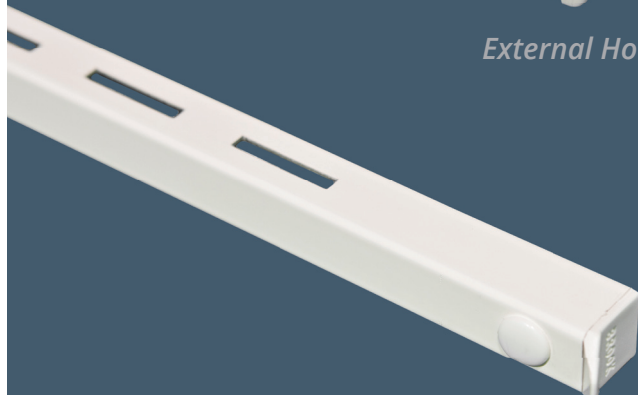



**SM 1000**

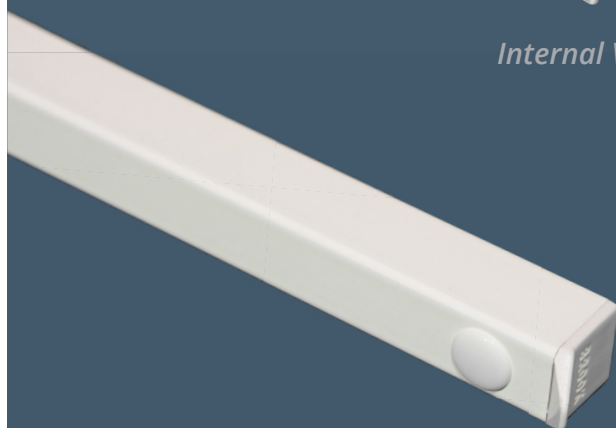
A slim, unobtrusive Surface Mounted vent complete with a thermal foam seal



*External Hood*



*Internal Vent* 







*Internal Vent* **FC**







### Features

- Slimline vent
- Manual control
- Thermal foam seal (excl. Slot Trickle and Gas Option)
- Insect grille
- Double action close position
- Manufactured from extruded aluminium
- Polyester powder coated
- 10 Year Guarantee

### Options

-  Readymade & Bespoke Sizes
-  Bar Length
- FC** Fully Controllable Ventilation
-  Upward Deflecting Slot Trickle
-  Gas Regulation Vent  
(See Gas Boiler Sheet)

### Colours

-  White (HIPCA) RAL 9910 "Semi-gloss"
-  Black RAL 9005 "Semi-gloss"
-  Brown RAL 8017 "Semi-gloss"
-  Oak RAL 8003 "Semi-gloss"
-  Cream RAL 9001 "Semi-gloss"
-  Mill Finish

Bespoke Colours and Finishes Available

## Slot Trickle Option

In the closed position the slot trickle option provides upward deflecting, draught free, ventilation up to 2500mm<sup>2</sup>/m (Open Area)

## Air Permeability

50 Pa 0.14 l/s (Closed Position)

Tested to BS EN 13141-1

## Water Tightness

Pressure @ No Leakage 600 Pa

Tested to BS EN 13141-1

## Acoustics

Under normal conditions the airvent SM 1000 achieved the following Sound Reduction results:

Position	Acoustic Detail
<b>OPEN</b>	Up to 32 db Dnt Rw
<b>CLOSED</b>	Up to 43 db Dnt Rw
<b>OPEN</b>	Up to 29 db Dne W
<b>CLOSED</b>	Up to 40 db Dne W

Acoustic test data available upon request

## Bar Length

Internal vent 2.87m / External hood 2.6m

## Geometric Modular Sizes

Geometric Open Area	Equivalent Area	Overall Slot Size	Overall Vent Length	Overall Hood Length
2000mm <sup>2</sup>	1417mm <sup>2</sup>	10mm x 205mm	260mm	250mm
3000mm <sup>2</sup>	2204mm <sup>2</sup>	10mm x 305mm	360mm	350mm
4000mm <sup>2</sup>	2985mm <sup>2</sup>	10mm x 405mm	460mm	450mm
5000mm <sup>2</sup>	3676mm <sup>2</sup>	10mm x 505mm	560mm	550mm
6000mm <sup>2</sup>	4492mm <sup>2</sup>	10mm x 605mm	660mm	650mm

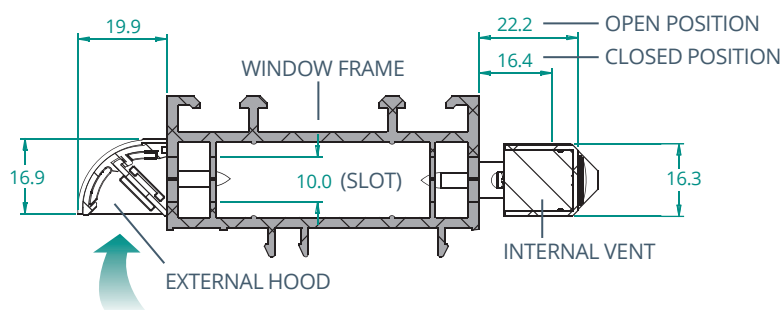
☰ Bespoke sizes available

## Equivalent Modular Sizes

Equivalent Area	Geometric Open Area	Overall Slot Size	Overall Vent Length	Overall Hood Length
2500mm <sup>2</sup>	3450mm <sup>2</sup>	10mm x 345mm	400mm	390mm
3000mm <sup>2</sup>	4150mm <sup>2</sup>	10mm x 415mm	470mm	460mm
3500mm <sup>2</sup>	4850mm <sup>2</sup>	10mm x 485mm	540mm	530mm
4000mm <sup>2</sup>	5550mm <sup>2</sup>	10mm x 555mm	610mm	600mm

☰ Bespoke sizes available

## Cross Section Dimensions



Dimensions in mm



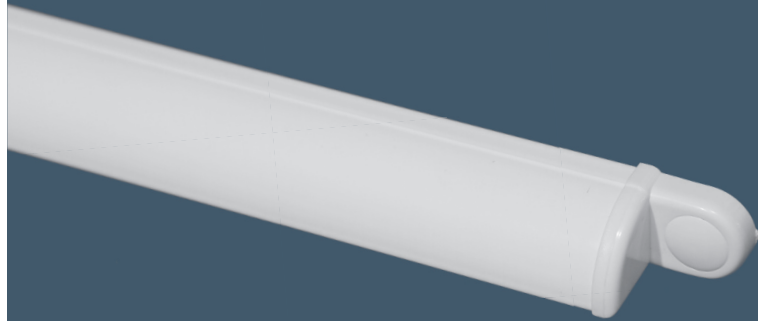
air window ventilation range

**BROOKVENT**

**airvent** 

**SM 1000+**

A slim, unobtrusive Surface Mounted vent complete with a thermal foam seal and rod control operation that complies with Part F & Part N (Building Regulations: England & Wales) ensuring ease of use



*External Hood*






*Internal Vent*







### Features

- Slimline vent
- Rod Control (left or right hand)
- Thermal foam seal (excl. Slot Trickle)
- Insect grille
- Double action close position
- Manufactured from extruded aluminium
- Polyester powder coated
- 10 Year Guarantee

### Options

-  Readymade & Bespoke Sizes
- FC** Fully Controllable Ventilation
-  Upward Deflecting Slot Trickle
-  Rod length at: 300 / 600 / 900mm

### Colours

-  White (HIPCA) RAL 9910 "Semi-gloss"
-  Black RAL 9005 "Semi-gloss"
-  Brown RAL 8017 "Semi-gloss"
-  Oak RAL 8003 "Semi-gloss"
-  Cream RAL 9001 "Semi-gloss"
-  Mill Finish

Bespoke Colours and Finishes Available

### Part N excerpt:

"Controls should not be more than 1.9m above the floor or other permanent stable surface provided to give access, and not more than 1.7m if obstructed"



## Slot Trickle Option

In the closed position the slot trickle option provides upward deflecting, draught free, ventilation up to 2500mm<sup>2</sup>/m (Open Area)

## Air Permeability

**50 Pa** 0.14 l/s (Closed Position)

Tested to BS EN 13141-1

## Water Tightness

**Pressure @ No Leakage** 600 Pa

Tested to BS EN 13141-1

## Acoustics

Under normal conditions the airvent SM 1000+ achieved the following Sound Reduction results:

Position	Acoustic Detail
<b>OPEN</b>	Up to 32 db Dnt Rw
<b>CLOSED</b>	Up to 43 db Dnt Rw
<b>OPEN</b>	Up to 29 db Dne W
<b>CLOSED</b>	Up to 40 db Dne W

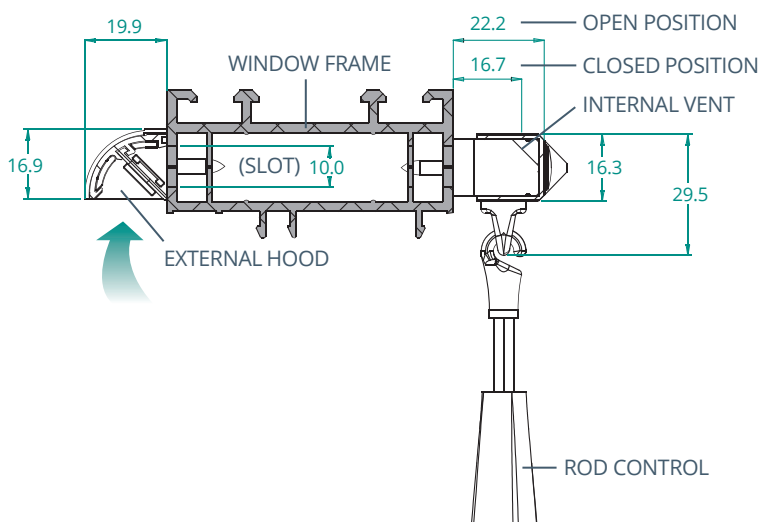
Acoustic test data available upon request

## Equivalent Modular Sizes

Equivalent Area	Geometric Open Area	Overall Slot Size	Overall Vent Length	Overall Hood Length
<b>2500mm<sup>2</sup></b>	3450mm <sup>2</sup>	10mm x 345mm	420mm	390mm
<b>3000mm<sup>2</sup></b>	4150mm <sup>2</sup>	10mm x 415mm	490mm	460mm
<b>3500mm<sup>2</sup></b>	4850mm <sup>2</sup>	10mm x 485mm	560mm	530mm
<b>4000mm<sup>2</sup></b>	5550mm <sup>2</sup>	10mm x 555mm	630mm	600mm

☰ Bespoke sizes available

## Cross Section Dimensions



Dimensions in mm



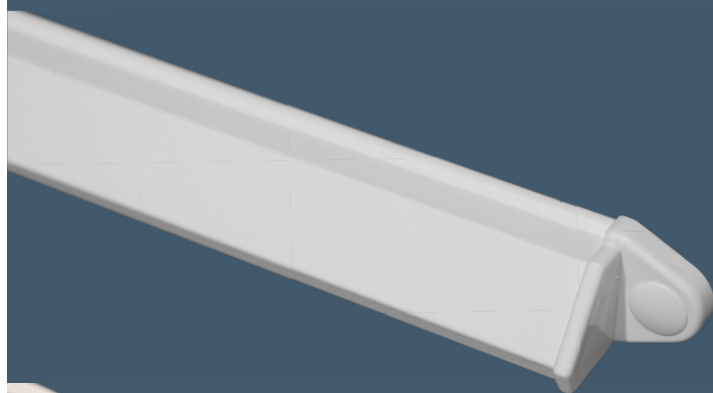
air window ventilation range

**BROOKVENT**

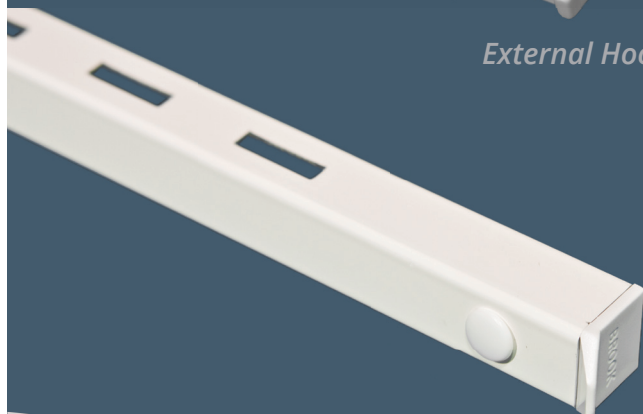
# airvent

## SM 1200

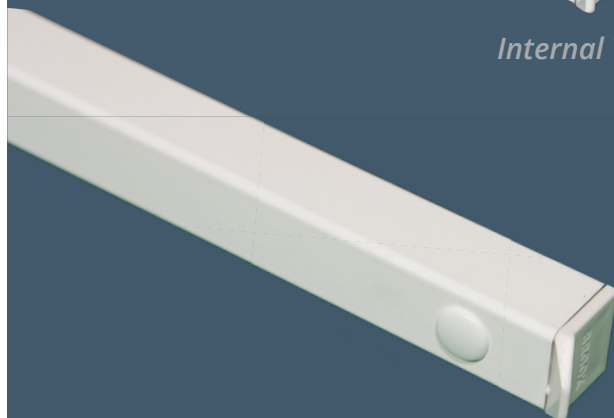
A compact, high performing Surface Mounted vent with a thermal foam seal



External Hood



Internal Vent 







Internal Vent **FC**







### Features

- Manual control
- Thermal foam seal (excl. Slot Trickle and Gas Option)
- Insect grille
- Double action close position
- Manufactured from extruded aluminium
- Polyester powder coated
- 10 Year Guarantee

### Options

-  Readymade & Bespoke Sizes
-  Bar Length
- FC** Fully Controllable Ventilation
-  Upward Deflecting Slot Trickle
-  Gas Regulation Vent  
(See Gas Boiler Sheet)

### Colours

-  White (HIPCA) RAL 9910 "Semi-gloss"
-  Black RAL 9005 "Semi-gloss"
-  Brown RAL 8017 "Semi-gloss"
-  Oak RAL 8003 "Semi-gloss"
-  Cream RAL 9001 "Semi-gloss"
-  Mill Finish

Bespoke Colours and Finishes Available

## Acoustics

Under normal conditions the airvent SM 1200 achieved the following Sound Reduction results:

Position	Acoustic Detail
<b>OPEN</b>	Up to 32 db Dnt Rw
<b>CLOSED</b>	Up to 43 db Dnt Rw
<b>OPEN</b>	Up to 30 db Dne W
<b>CLOSED</b>	Up to 47 db Dne W

Acoustic test data available upon request

## Geometric Modular Sizes

Geometric Open Area	Equivalent Area	Overall Slot Size	Overall Vent Length	Overall Hood Length
<b>2000mm<sup>2</sup></b>	1705mm <sup>2</sup>	13mm x 160mm	240mm	205mm
<b>3000mm<sup>2</sup></b>	2384mm <sup>2</sup>	13mm x 235mm	315mm	280mm
<b>4000mm<sup>2</sup></b>	3200mm <sup>2</sup>	13mm x 320mm	400mm	365mm
<b>5000mm<sup>2</sup></b>	3940mm <sup>2</sup>	13mm x 390mm	470mm	440mm
<b>6000mm<sup>2</sup></b>	4873mm <sup>2</sup>	13mm x 470mm	550mm	520mm
<b>7000mm<sup>2</sup></b>	5649mm <sup>2</sup>	13mm x 540mm	620mm	600mm
<b>8000mm<sup>2</sup></b>	6495mm <sup>2</sup>	13mm x 620mm	700mm	680mm

☰ Bespoke sizes available

## Equivalent Modular Sizes

Equivalent Area	Geometric Open Area	Overall Slot Size	Overall Vent Length	Overall Hood Length
<b>2500mm<sup>2</sup></b>	3315mm <sup>2</sup>	13mm x 255mm	335mm	300mm
<b>3000mm<sup>2</sup></b>	3900mm <sup>2</sup>	13mm x 300mm	380mm	345mm
<b>3500mm<sup>2</sup></b>	4550mm <sup>2</sup>	13mm x 350mm	430mm	395mm
<b>4000mm<sup>2</sup></b>	5135mm <sup>2</sup>	13mm x 395mm	475mm	440mm
<b>4500mm<sup>2</sup></b>	5720mm <sup>2</sup>	13mm x 440mm	520mm	485mm
<b>5000mm<sup>2</sup></b>	6305mm <sup>2</sup>	13mm x 485mm	565mm	530mm

☰ Bespoke sizes available

## Air Permeability

**50 Pa** 0.41 l/s (Closed Position)

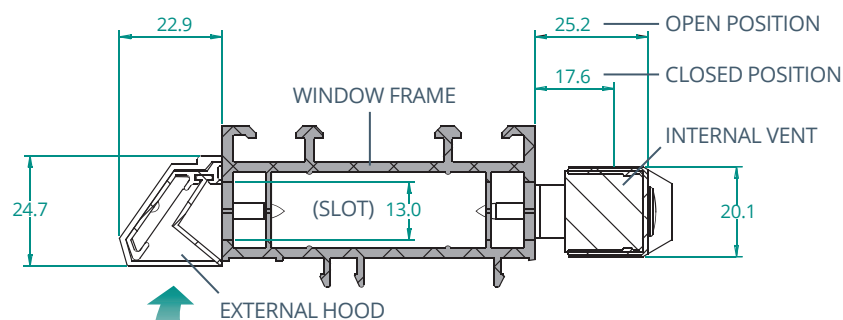
Tested to BS EN 13141-1

## Water Tightness

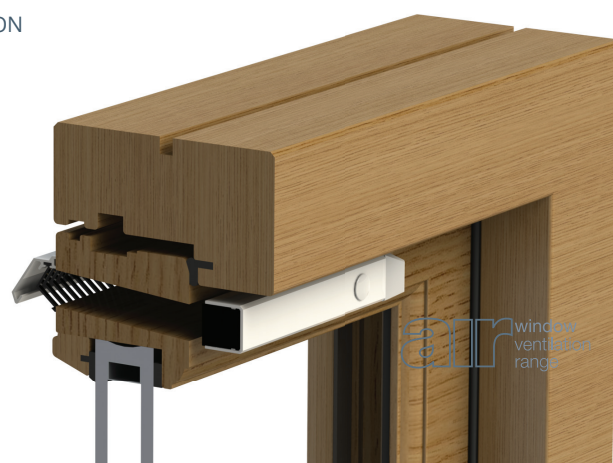
**Pressure @ No Leakage** 600 Pa

Tested to BS EN 13141-1

## Cross Section Dimensions



Dimensions in mm



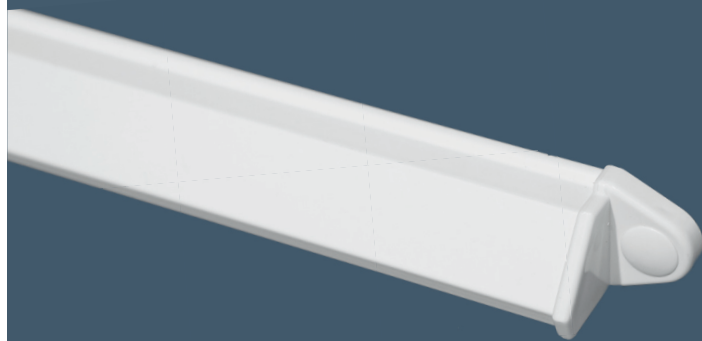
air window ventilation range

**BROOKVENT**

# airvent

## SM 1200+

A compact, unobtrusive Surface Mounted vent complete with a thermal foam seal and rod control operation that complies with Part F & Part N (Building Regulations: England & Wales) ensuring ease of use



*External Hood*



*Internal Vent*

### Features

- Slimline vent
- Rod Control (left or right hand)
- Thermal foam seal (excl. Slot Trickle)
- Insect grille
- Double action close position
- Manufactured from extruded aluminium
- Polyester powder coated
- 10 Year Guarantee

### Options

- ☰ Readymade & Bespoke Sizes
- FC** Fully Controllable Ventilation
- ⬆️ Upward Deflecting Slot Trickle
- ⬇️ Rod length at: 300 / 600 / 900mm

### Colours

- White (HIPCA) RAL 9910 "Semi-gloss"
- Black RAL 9005 "Semi-gloss"
- Brown RAL 8017 "Semi-gloss"
- Oak RAL 8003 "Semi-gloss"
- Cream RAL 9001 "Semi-gloss"
- Mill Finish

Bespoke Colours and Finishes Available

### Part N excerpt:

"Controls should not be more than 1.9m above the floor or other permanent stable surface provided to give access, and not more than 1.7m if obstructed"

## Slot Trickle Option

In the closed position the slot trickle option provides upward deflecting, draught free, ventilation up to 2500mm<sup>2</sup>/m (Open Area)

## Acoustics

Under normal conditions the airvent SM 1200+ achieved the following Sound Reduction results:

Position	Acoustic Detail
<b>OPEN</b>	Up to 30 db Dne W
<b>CLOSED</b>	Up to 47 db Dne W

Acoustic test data available upon request

## Equivalent Modular Sizes

Equivalent Area	Geometric Open Area	Overall Slot Size	Overall Vent Length	Overall Hood Length
<b>2500mm<sup>2</sup></b>	3315mm <sup>2</sup>	13mm x 255mm	355mm	300mm
<b>3000mm<sup>2</sup></b>	3900mm <sup>2</sup>	13mm x 300mm	400mm	345mm
<b>3500mm<sup>2</sup></b>	4550mm <sup>2</sup>	13mm x 350mm	450mm	395mm
<b>4000mm<sup>2</sup></b>	5135mm <sup>2</sup>	13mm x 395mm	495mm	440mm
<b>4500mm<sup>2</sup></b>	5720mm <sup>2</sup>	13mm x 440mm	540mm	485mm
<b>5000mm<sup>2</sup></b>	6305mm <sup>2</sup>	13mm x 485mm	585mm	530mm

 Bespoke sizes available

## Air Permeability

**50 Pa** 0.41 l/s (Closed Position)

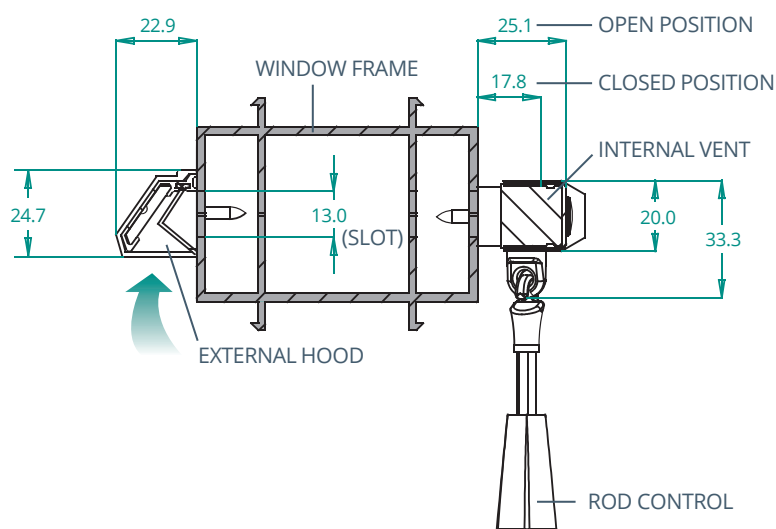
Tested to BS EN 13141-1

## Water Tightness

**Pressure @ No Leakage** 600 Pa

Tested to BS EN 13141-1

## Cross Section Dimensions

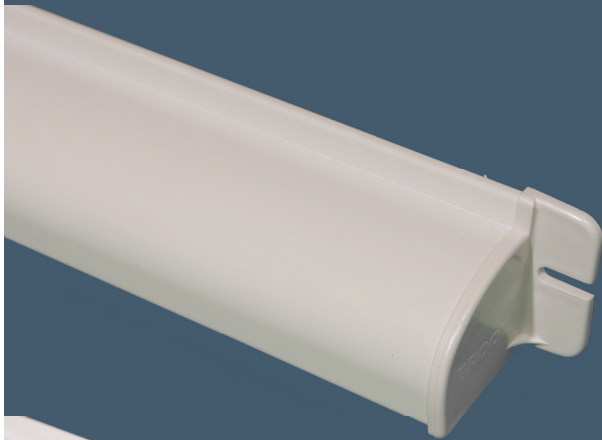


**BROOKVENT**

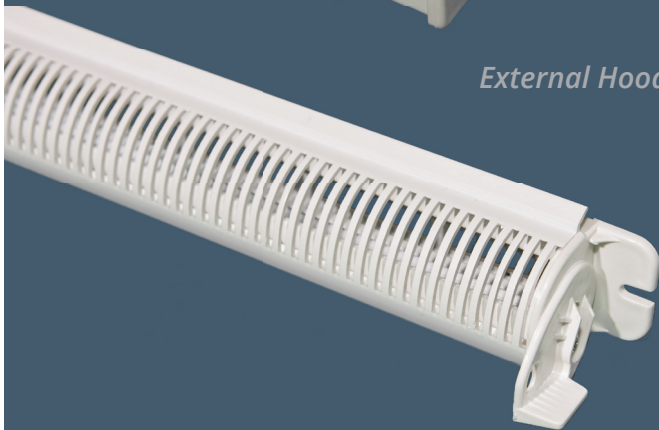
**airvent** 

**SM 1400**

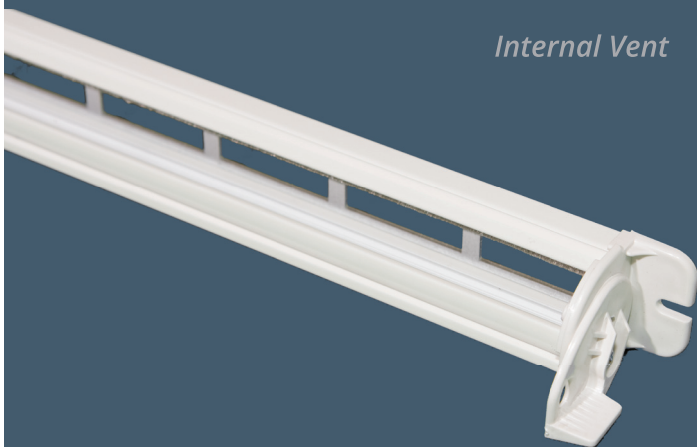
A severe weather rated Surface Mounted vent complete with wool pile seals. Ideal for high-rise buildings



*External Hood*



*Internal Vent* 








*Internal Vent*

### Features

- Wool pile seals
- Insect grille
- Natural upward deflection
- Manufactured from extruded aluminium
- Polyester powder coated
- Fully controllable ventilation
- 10 Year Guarantee

### Options

-  Manual Control
-  Rod control (Portable) 0.5m/1m
-  Bespoke Sizes
-  Bar Length
-  Internal removable grille (ease of cleaning in high rise projects)

### Colours

-  White (HIPCA) RAL 9910 "Semi-gloss"
-  Mill Finish

Bespoke Colours and Finishes Available

## Acoustics

Under normal conditions the airvent SM 1400 achieved the following Sound Reduction results:

Position	Acoustic Detail
<b>OPEN</b>	Up to 32 db Dne W
<b>CLOSED</b>	Up to 39 db Dne W

Acoustic test data available upon request

## Bar Length

Internal vent 2.4m / External hood 2.4m

## Modular Sizes

Geometric Open Area	Equivalent Area	Overall Slot Size	Overall Vent Length	Overall Hood Length
2296mm <sup>2</sup>	1575mm <sup>2</sup>	16mm x 160mm	200mm	200mm
2996mm <sup>2</sup>	2200mm <sup>2</sup>	16mm x 210mm	250mm	250mm
3696mm <sup>2</sup>	2825mm <sup>2</sup>	16mm x 260mm	300mm	300mm
4396mm <sup>2</sup>	3450mm <sup>2</sup>	16mm x 310mm	350mm	350mm
5096mm <sup>2</sup>	4075mm <sup>2</sup>	16mm x 360mm	400mm	400mm
5796mm <sup>2</sup>	4700mm <sup>2</sup>	16mm x 410mm	450mm	450mm
6496mm <sup>2</sup>	5325mm <sup>2</sup>	16mm x 460mm	500mm	500mm
7196mm <sup>2</sup>	5950mm <sup>2</sup>	16mm x 510mm	550mm	550mm
7896mm <sup>2</sup>	6575mm <sup>2</sup>	16mm x 560mm	600mm	600mm
8596mm <sup>2</sup>	7200mm <sup>2</sup>	16mm x 610mm	650mm	650mm
9296mm <sup>2</sup>	7825mm <sup>2</sup>	16mm x 660mm	700mm	700mm

☰ Bespoke sizes available

## Air Permeability

**50 Pa** 0.3 l/s (Closed Position)

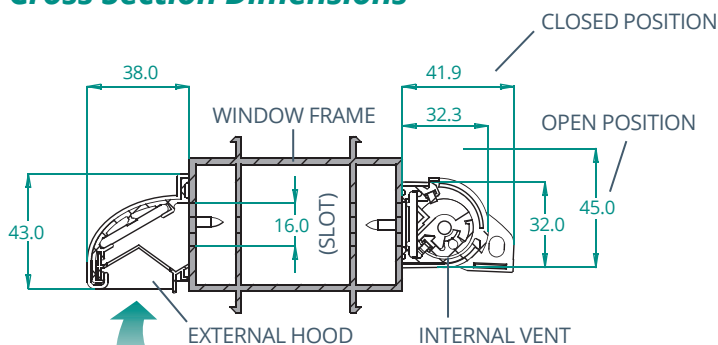
Tested to BS EN 13141-1

## Water Tightness

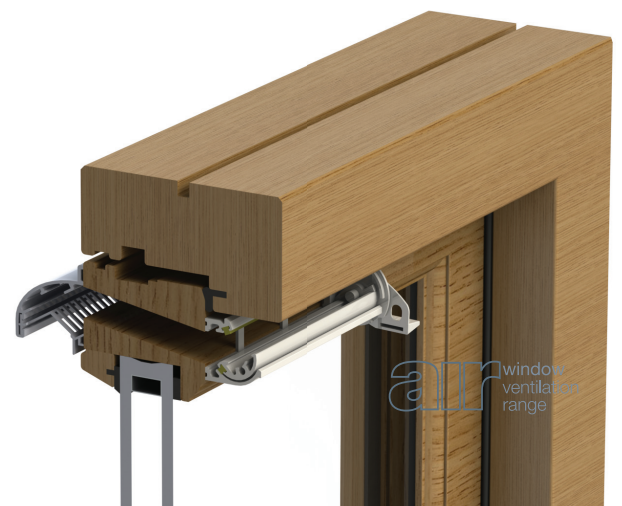
**Pressure @ No Leakage** 1000 Pa

Tested to BS EN 13141-1

## Cross Section Dimensions



Dimensions in mm



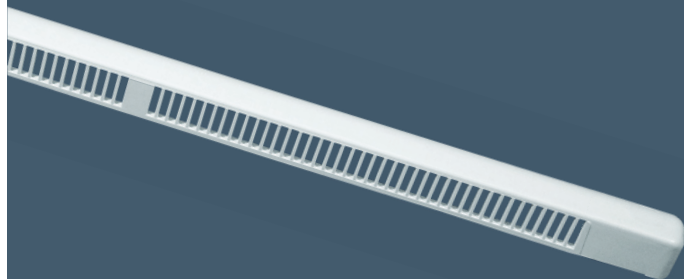
**BROOKVENT**

**airvent** 

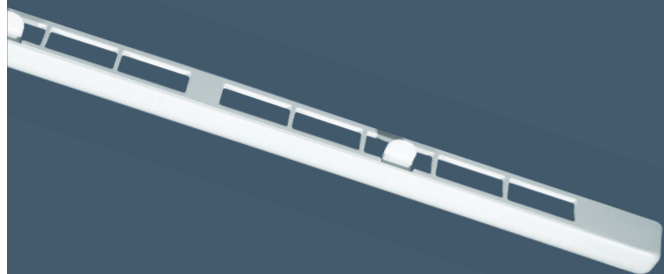
## SM TIP VENT

**NEW**

A modern, high quality ABS window vent available in 2 core airflow sizes



*External Hood*










*Internal Vent*

### Features

- 2 Core product sizes:  
2700mm<sup>2</sup> EA/ 4000mm<sup>2</sup> Open Area  
1250mm<sup>2</sup> EA/ 2000mm<sup>2</sup> Open Area
- Dual opening internal vent, allowing a choice of 2 airflow modes (2700EA Only)
- Modern, rounded design
- Manufactured from high quality, UV-stabilised ABS
- External hood complete with insect grille as standard
- Positive open and close action
- Screw fix and/or clip fix options
- 2 year manufacturer's guarantee

### Colours

	White	
	Black	RAL 9005
	Anthracite Grey	RAL 7016
	Brown	RAL 8017
	Oak	RAL 8003
	Cream	RAL 9001
	Chartwell Green	

Mixed colour sets of internal vent and external hood available on request



## Air Permeability

50 Pa 3.9 l/s (Closed Position)

Tested to BS EN 13141-1

## Water Tightness

Pressure @ No Leakage 600 Pa

Tested to BS EN 13141-1

\*the performance data in these tables applies to the 2700mm<sup>2</sup> EA vent

## Airflow Guide

Geometric Open Area	Equivalent Area	Overall Slot Size	Overall Vent Length	Overall Hood Length
4000mm <sup>2</sup>	2700mm <sup>2</sup>	12mm x 360mm [(170mm x 2 Slots) + 20 Bridge] - Screw Fix	430mm	430mm
4000mm <sup>2</sup>	2700mm <sup>2</sup>	12mm x 380mm [(120mm x 3 Slots) + (2 x 10mm Bridge)] - Screw and/or Clip Fix	430mm	430mm
2000mm <sup>2</sup>	1250mm <sup>2</sup>	12mm x 190mm - Screw and/or Clip Fix	249mm	249mm

## Acoustics

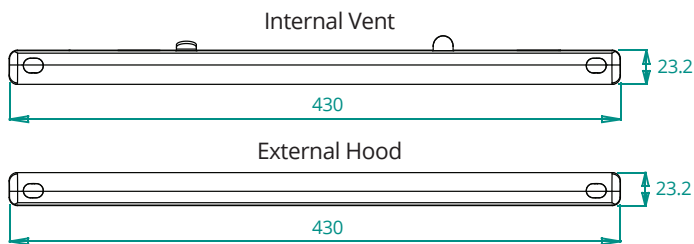
Under normal conditions the SM TIP VENT achieved the following Sound Reduction results:

Position	Acoustic Detail
OPEN	Up to 32 db Dne W
CLOSED	Up to 38 db Dne W

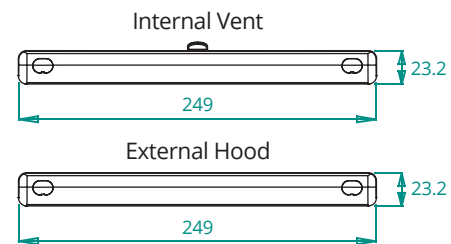
Tested to BS EN ISO 717-1: 1999 & BS EN ISO 10140-2: 2011

## Dimensions (mm)

Size: 2700mm<sup>2</sup> Equivalent Area | 4000mm<sup>2</sup> Geometric Open Area

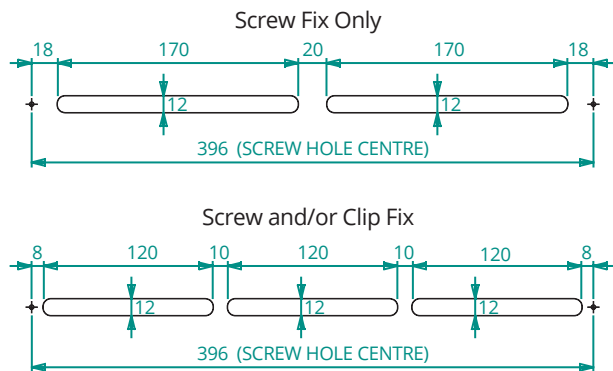


Size: 1250mm<sup>2</sup> Equivalent Area | 2000mm<sup>2</sup> Geometric Open Area

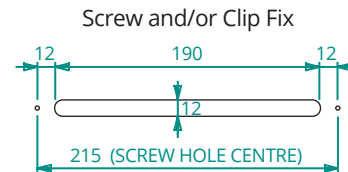


## Slot Detail (mm)

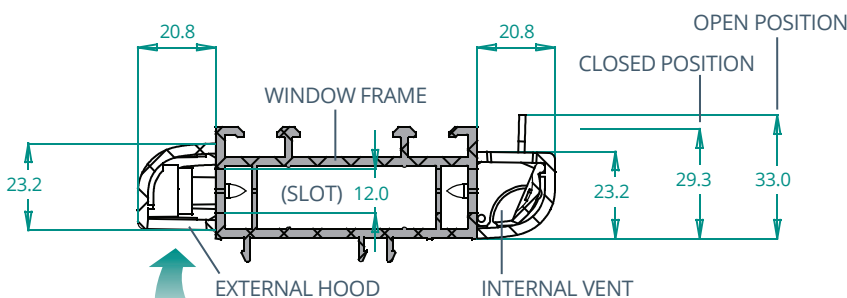
Size: 2700mm<sup>2</sup> Equivalent Area | 4000mm<sup>2</sup> Geometric Open Area



Size: 1250mm<sup>2</sup> Equivalent Area | 2000mm<sup>2</sup> Geometric Open Area



## Cross Section Dimensions



Dimensions in mm



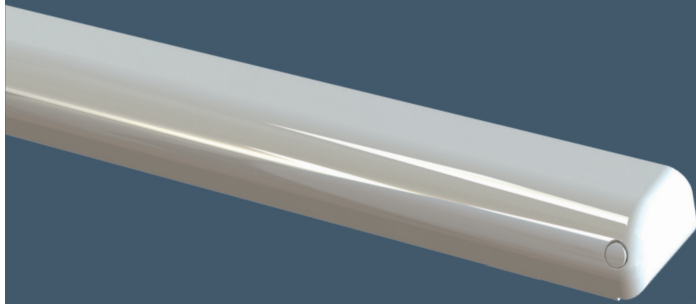
**BROOKVENT**

# airvent

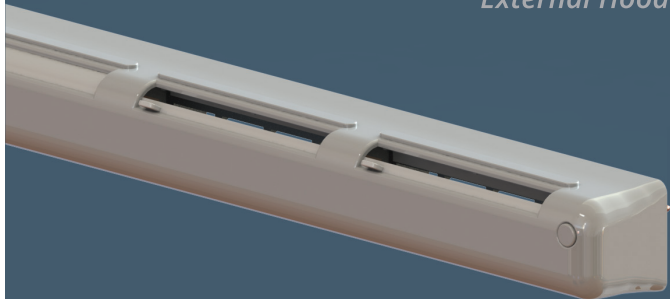
## SM ACOUSTIC

NEW

A high quality, ABS acoustic window vent offering 2600mm<sup>2</sup> EA airflow and providing a 40 db Dne W sound reduction in the open position



*External Hood*



*Internal Vent*

### Features

- 2600mm<sup>2</sup> Equivalent Area
- 40 db Dne W reduction in the open position
- 3 airflow modes with variable open settings
- Modern, rounded design
- Manufactured from high quality, UV-stabilised ABS
- External hood complete with insect grille as standard
- Unique gasket seal design
- Removable slot trickle option as standard
- 5 year manufactures guarantee

### Colours

	White	RAL 9003
	Anthracite Grey	RAL 7016
	Brown	RAL 8017
	Oak	RAL 8001
	Tele Grey	RAL 7047

Mixed colour sets of internal vent and external hood also available on request.

## Air Permeability

50 Pa 4.3 l/s (Closed Position)

Tested to BS EN 13141-1

## Water Tightness

Pressure @ No Leakage 300 Pa

Tested to BS EN 13141-1

## Airflow

Equivalent Area 2600mm<sup>2</sup>

Geometric Open Area 3000mm<sup>2</sup>

## Acoustics

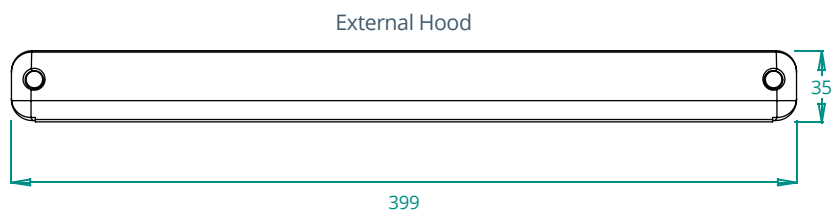
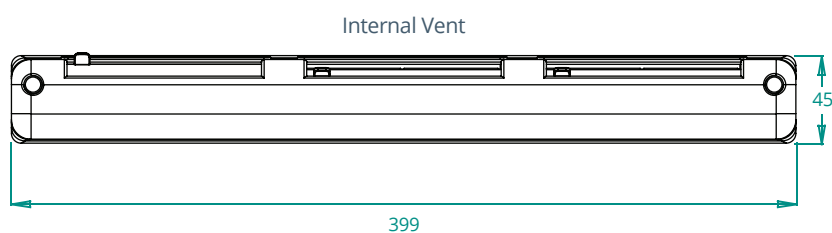
Under normal conditions the SM ACOUSTIC achieved the following Sound Reduction results:

Position	Acoustic Detail
<b>OPEN</b>	Up to 40 db Dne W
<b>CLOSED</b>	Up to 44 db Dne W
<b>OPEN</b>	Up to Dne W Ctr 39
<b>CLOSED</b>	Up to Dne W Ctr 42

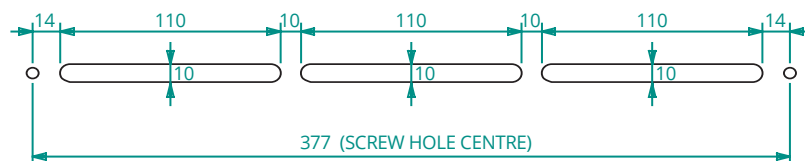
Tested to BS EN ISO 717-1: 1999

& BS EN ISO 10140-2: 2011

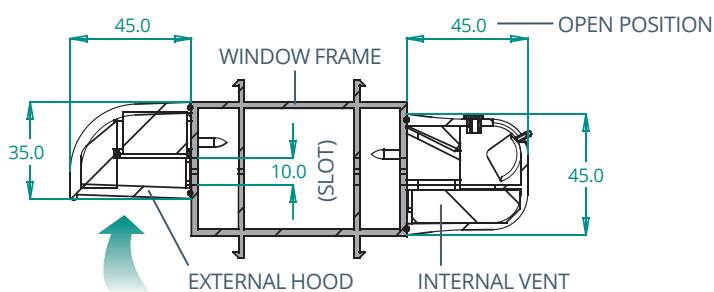
## Dimensions (mm)



## Slot Detail (mm)



## Cross Section Dimensions



Dimensions in mm



air window ventilation range

**BROOKVENT**

# gasvent

Surface Mounted



Gasvent 1000 (external view)



Gasvent 1200 (external view)

## gasvent 1000 (set)

- Natural upward deflection
- Gas regulation mesh insect grille
- Readymade and bespoke sizes
- Bar Length
- Max. Height - 17mm
- Slot Height - 10mm

## gasvent 1200 (set)

- Natural upward deflection
- Gas regulation mesh insect grille
- Readymade and bespoke sizes
- Bar Length
- Max. Height - 25mm
- Slot Height - 13mm

### Air Supply

**Size A** - 4000mm<sup>2</sup>/m  
Geometric Open Area

**Size B** - 7500mm<sup>2</sup>/m  
Geometric Open Area

**Size C** - 11000mm<sup>2</sup>/m  
Geometric Open Area

### Boiler Input

Up to 15kW\*  
(51000 BTU/h)

Up to 22kW\*  
(75000 BTU/h)

Up to 29kW\*  
(99000 BTU/h)

### Minimum Corresponding Vent Glazing Length & Slot

PRODUCT	Size A		Size B		Size C	
	Length Overall	Slot	Length Overall	Slot	Length Overall	Slot
<b>GV1000 SET</b>	500mm	455mm	500mm (x2)	455mm (x2)	500mm (x3)	455mm (x3)
<b>GV1200 SET</b>	365mm	320mm	365mm (x2)	320mm (x2)	365mm (x3)	320mm (x3)

### \* Boiler Input Calculation's

These Calculations are provided as a guide only, please refer to a qualified gas professional for full guidance in complying with BS 5440-2 : 2009.

### Gasvent Labels

Each gas ventilator is provided with a label as standard. The label relates to the minimum open area for the length of the vent. These labels are displayed prominently on the internal body of the vent.

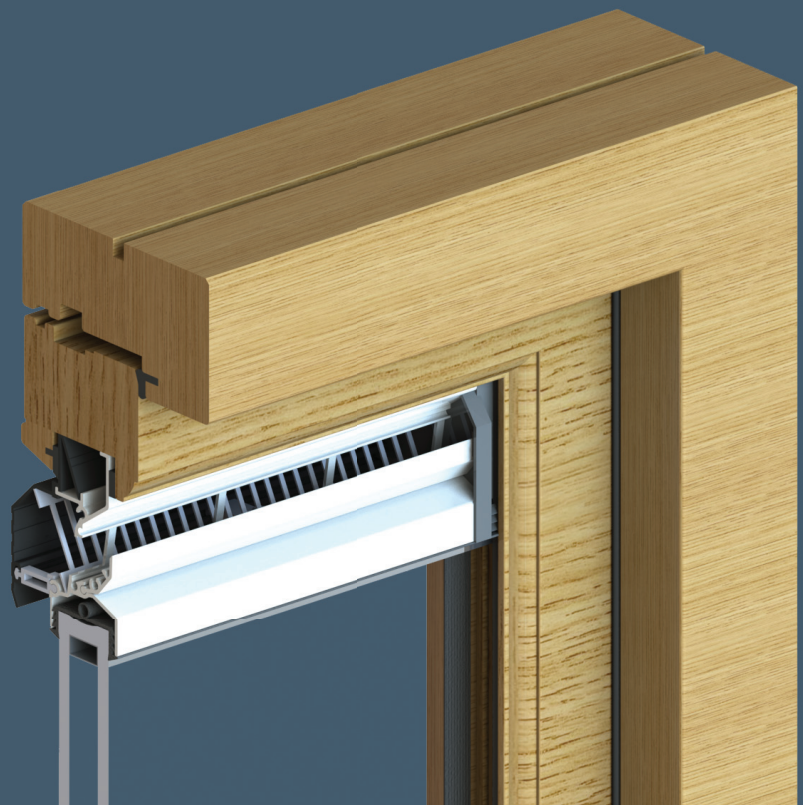


**BROOKVENT**

# airvent

Glazed In Window Vents

Suitable for  
all types of  
window frame  
construction



## Product Comparison Table

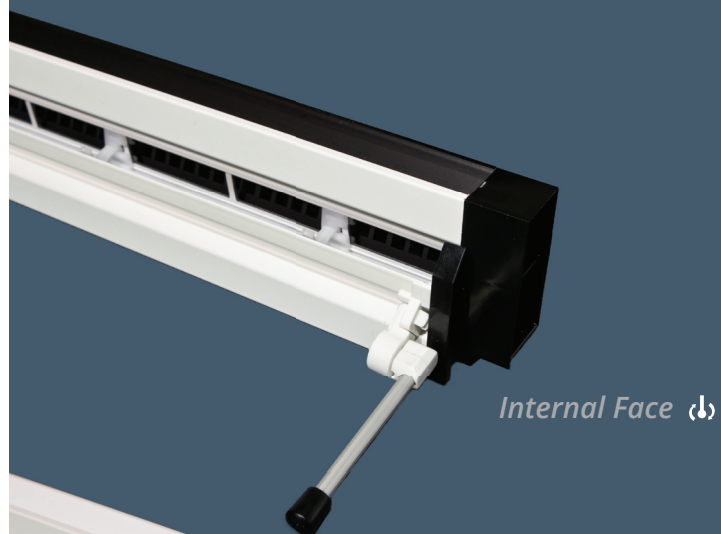
	DG 1500	DG Standard	Thermal Break	PD (Patio Door)
Internal Vent Material	Aluminium	Aluminium	Aluminium	Aluminium
External Hood Material	uPVC	uPVC	uPVC	uPVC
Aluminium Hood	Optional	Optional	Optional	No
Glass Thickness	24 & 28mm	20, 24 & 28mm	28mm	24 & 28mm
Equivalent Area per M (Fully Controllable)	24mm Glass Thickness: 10907mm <sup>2</sup>	24mm Glass Thickness: 5293mm <sup>2</sup>	-	24mm Glass Thickness: 8332mm <sup>2</sup>
	28mm Glass Thickness: 11045mm <sup>2</sup>	28mm Glass Thickness: 5338mm <sup>2</sup>	28mm Glass Thickness: 5670mm <sup>2</sup>	28mm Glass Thickness: 8552mm <sup>2</sup>
Open Area per M (Fully Controllable)	24mm Glass Thickness: 15000mm <sup>2</sup>	24mm Glass Thickness: 6387mm <sup>2</sup>	-	24mm Glass Thickness: 8884mm <sup>2</sup>
	28mm Glass Thickness: 15000mm <sup>2</sup>	28mm Glass Thickness: 6387mm <sup>2</sup>	28mm Glass Thickness: 6414mm <sup>2</sup>	28mm Glass Thickness: 8884mm <sup>2</sup>
Control	Manual Knob, Cord or Rod	Manual Knob or Cord	Manual Knob or Cord	Manual Knob or Cord
Acoustics	Fully Open: 27 db Dnt Rw 28 db Dne W	Fully Open: 30 db Dnt Rw 30 db Dne W	Fully Open: 30 db Dnt Rw 30 db Dne W	Fully Open: 27 db Dnt Rw 31 db Dne W
	Concealed Trickle: - 33 db Dne W	Concealed Trickle: 37 db Dnt Rw 36 db Dne W	-	Concealed Trickle: 37 db Dnt Rw 37 db Dne W
	Closed: 35.5 db Dnt Rw 40 db Dne W	Closed: 40 db Dnt Rw 40 db Dne W	Closed: 42.5 db Dnt Rw 42 db Dne W	Closed: 38 db Dnt Rw 40 db Dne W
Standard Colours "Semi-gloss" (Bespoke also avail.)	White (HIPCA, RAL 9910) Black (RAL 9005)	White (HIPCA, RAL 9910) Black (RAL 9005)	White (HIPCA, RAL 9910) Black (RAL 9005)	White (HIPCA, RAL 9910) Black (RAL 9005)
Permanently Open Option	Yes	Yes	No	Yes
Concealed Trickle Option	Yes	Yes	No	Yes
Upward Deflection	As Standard	Optional	Optional	Optional
Gas Regulation Option	Yes	No	No	Yes
Bar Length Supply	No	Yes	No	Yes
Guarantee	10 Years	10 Years	10 Years	10 Years
Page Number	23-24, 32	25-26	27-28	29-30, 32

**BROOKVENT**

# airvent

## DG 1500

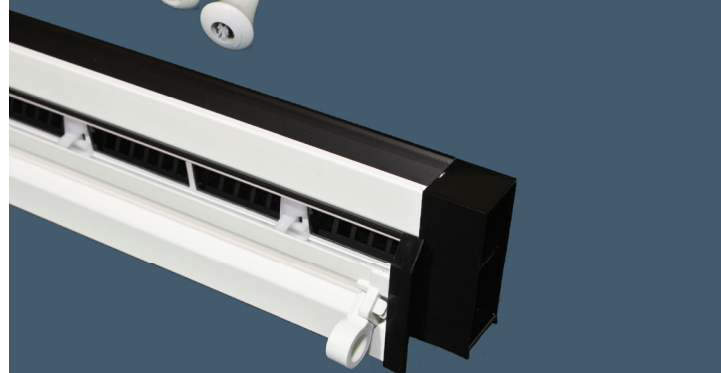
A high performing Glazed In vent that succeeds in achieving high ventilation rates in even the narrowest of window styles



Internal Face (b)



Internal Face (a)



Internal Face (c)

### Features

- Natural upward deflection
- Insect grille
- Manufactured from extruded aluminium (vent body)
- Polyester powder coated
- 10 Year Guarantee
- uPVC Hood

### Options

- (c) Manual Control
- (a) Cord Control (Right or Left hand)
- (b) Rod Control
- (≡) Bespoke Sizes
- ALU** Aluminium Hood
- FC** Fully Controllable Ventilation
- ⋯ Concealed Trickle Ventilation
- ↔ Permanently Open Ventilation
- 🔥 Gas Regulation Vent (see Gas Boiler Sheet)

### Colours

- White (HIPCA) RAL 9910 "Semi-gloss"
- Black RAL 9005 "Semi-gloss"
- Mill Finish

Bespoke Colours and Finishes Available



## Unit sizes (Glass Thickness)

Available in 24mm and 28mm

## Sizing Guidelines

Whilst the Brookvent range of Glazed-in Window Ventilators has been designed to suit all window systems, Brookvent strongly advise a test installation be carried out. This test should:

- Check that the correct glass reduction has been applied
- Ensure that sufficient working clearance remains to successfully fit the glazing beads

Please note that the overall ventilator width is usually the same as the glass unit width.

## Airflow Guide

Glass Thickness	Option	Equivalent Area/Metre	Length for 2500 EA	Length for 5000 EA	Geometric Open Area/Metre
<b>24mm</b>	DG 1500 Fully Controllable & Concealed Trickle	10907	229mm	458mm	15000mm
<b>28mm</b>	DG 1500 Fully Controllable & Concealed Trickle	11045	226mm	453mm	15000mm

☰ Bespoke sizes available

## Air Permeability

**50 Pa** 0.42 l/s (Closed Position)

Tested to BS EN 13141-1

## Glass Height Reduction (Guide Only)

For 24mm (Glass Thickness) the normal glass height reduction is 65mm for a 15mm rebate, to give a 12mm maximum glazing depth. If the rebate exceeds 15mm then the glass height should be reduced in proportion (e.g. 22mm rebate = 72mm reduction).

The 28mm (Glass Thickness) option may differ due a 5mm height increase to the ventilator head detail (i.e. glass height reduction of 70mm). This allows for greater penetration into the window rebate without necessarily increasing the glass reduction.

## Acoustics

Under normal conditions the airvent DG 1500 achieved the following Sound Reduction results:

Position	Acoustic Detail
<b>FULLY OPEN</b> (Normal Operation Mode)	Up to 27 db Dnt Rw Up to 28 db Dne W
<b>CLOSED</b> (Concealed Trickle)	Up to 33 db Dne W
<b>CLOSED</b>	Up to 35.5 db Dnt Rw Up to 40 db Dne W

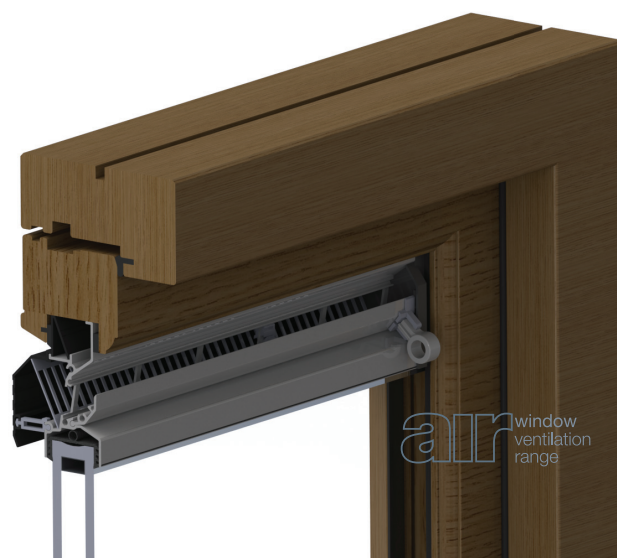
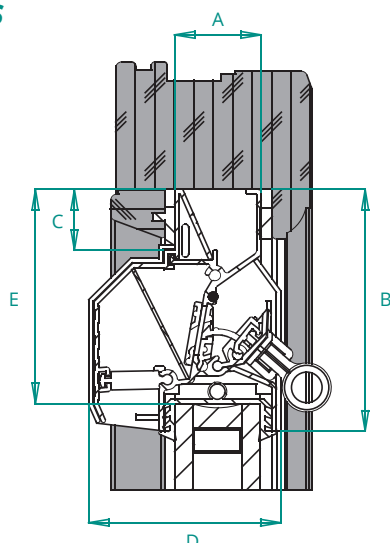
Acoustic test data available upon request

## Cross Section Dimensions

### DG1500

<b>A</b> (Glass Thickness)	<b>24 28</b>
<b>B</b> (Overall Height)	74 79
<b>C</b> (Rebate Depth)	15 20
<b>D</b> (Overall Width)	59 63
<b>E</b> (Glass Height Reduction)	65 70

Dimensions in mm



air window ventilation range

**BROOKVENT**

# airvent

## DG Standard

A durable, robust, and cost effective Glazed In Vent suitable for a wide range of applications



Internal Face 










Internal Face 




### Features

- Insect grille
- Manufactured from extruded aluminium (vent body)
- Polyester powder coated
- 10 Year Guarantee
- uPVC Hood

### Options

-  Manual Control
-  Cord Control (Right or Left hand)
-  Bespoke Sizes
-  Bar Length
-  Upward Deflector
- FC** Fully Controllable Ventilation
-  Concealed Trickle Ventilation
-  Permanently Open Ventilation
- ALU** Aluminium Hood

### Colours

-  White (HIPCA) RAL 9910 "Semi-gloss"
-  Black RAL 9005 "Semi-gloss"
-  Mill Finish

Bespoke Colours and Finishes Available

## Unit sizes (Glass Thickness)

Available in 20, 24mm and 28mm

## Sizing Guidelines

Whilst the Brookvent range of Glazed-in Window Ventilators has been designed to suit all window systems, Brookvent strongly advise a test installation be carried out. This test should:

- Check that the correct glass reduction has been applied
- Ensure that sufficient working clearance remains to successfully fit the glazing beads

Please note that the overall ventilator width is usually the same as the glass unit width.

## Airflow Guide

Glass Thickness	Option	Equivalent Area/Metre	Length for 2500 EA	Length for 5000 EA	Geometric Open Area/Metre
24mm	DG Standard (Fully Controllable)	5293	472mm	945mm	6387
24mm	DG Standard (Fully Controllable & Upward Deflector)	4841	516mm	1033mm	6387
24mm	DG Standard (Concealed Trickle)	5475	457mm	913mm	6769
24mm	DG Standard (Concealed Trickle & Upward Deflector)	5111	489mm	978mm	6769
28mm	DG Standard (Fully Controllable)	5338	468mm	937mm	6387
28mm	DG Standard (Fully Controllable & Upward Deflector)	4790	522mm	1044mm	6387
28mm	DG Standard (Concealed Trickle)	5385	464mm	929mm	6769
28mm	DG Standard (Concealed Trickle & Upward Deflector)	5141	486mm	973mm	6769

☰ Bespoke sizes available. 20mm Glass width performance data available on request.

## Air Permeability

50 Pa 1.52 l/s (Closed Position)

Tested to BS EN 13141-1

## Water Tightness

Pressure @ No Leakage 300 Pa

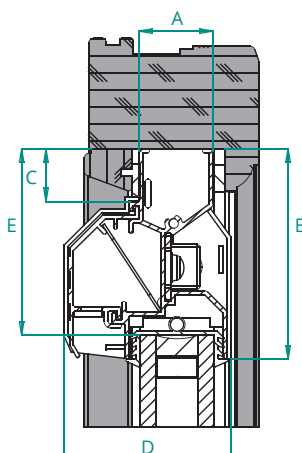
Tested to BS EN 13141-1

## Cross Section Dimensions

### DG Standard

	20	24	28
A (Glass Thickness)	20	24	28
B (Overall Height)	74	74	79
C (Rebate Depth)	15	15	20
D (Overall Width)	55	59	63
E (Glass Height Reduction)	65	65	70

Dimensions in mm



## Glass Height Reduction (Guide Only)

For 20 and 24mm (Glass Thickness) the normal glass height reduction is 65mm for a 15mm rebate, to give a 12mm maximum glazing depth. If the rebate exceeds 15mm then the glass height should be reduced in proportion (e.g. 22mm rebate = 72mm reduction).

The 28mm (Glass Thickness) option may differ due a 5mm height increase to the ventilator head detail (i.e. glass height reduction of 70mm). This allows for greater penetration into the window rebate without necessarily increasing the glass reduction.

## Bar Length

Internal face 3.7m

## Acoustics

Under normal conditions the airvent DG Standard achieved the following Sound Reduction results:

Position	Acoustic Detail
<b>FULLY OPEN</b> (Normal Operation Mode)	Up to 30 db Dnt Rw Up to 30 db Dne W
<b>CLOSED</b> (Concealed Trickle)	Up to 37 db Dnt Rw Up to 36 db Dne W
<b>CLOSED</b>	Up to 40 db Dnt Rw Up to 40 db Dne W

Acoustic test data available upon request



**BROOKVENT**

**airvent** 

## Thermal Break

A high performing Glazed In vent which provides a complete thermal barrier in the closed position. Its double seal and pressure pads ensure that it is ideally suited for high rise and exposed locations



Internal Face   








Internal Face 




### Features

- Thermally broken (uPVC Barrier)
- Insect grille
- Manufactured from extruded aluminium (vent body)
- Polyester powder coated
- 10 Year Guarantee
- uPVC Hood

### Options

-  Manual Control
-  Cord Control (Right hand)
-  Bespoke Sizes
-  Upward Deflector
- FC** Fully Controllable Ventilation
- ALU** Aluminium Hood

### Colours

-  White (HIPCA) RAL 9910 "Semi-gloss"
-  Black RAL 9005 "Semi-gloss"
-  Mill Finish

Bespoke Colours and Finishes Available

## Unit sizes (Glass Thickness)

Available in 28mm

## Sizing Guidelines

Whilst the Brookvent range of Glazed-in Window Ventilators has been designed to suit all window systems, Brookvent strongly advise a test installation be carried out. This test should:

- Check that the correct glass reduction has been applied
- Ensure that sufficient working clearance remains to successfully fit the glazing beads

Please note that the overall ventilator width is usually the same as the glass unit width.

## Airflow Guide

Glass Thickness	Option	Equivalent Area/Metre	Length for 2500 EA	Length for 5000 EA	Geometric Open Area/Metre
28mm	Thermal Break (Fully Controllable)	5670	441mm	882mm	6414
28mm	Thermal Break (Fully Controllable & Upward Deflector)	5225	478mm	957mm	6414

☰ Bespoke sizes available

## Air Permeability

**50 Pa** 0 l/s (Closed Position)

Tested to BS EN 13141-1

## Water Tightness

**Pressure @ No Leakage** 600 Pa

Tested to BS EN 13141-1

## Glass Height Reduction (Guide Only)

The 28mm (Glass Thickness) option may differ due a 5mm height increase to the ventilator head detail (i.e. glass height reduction of 70mm). This allows for greater penetration into the window rebate without necessarily increasing the glass reduction.

## Acoustics

Under normal conditions the airvent Thermal Break achieved the following Sound Reduction results:

Position	Acoustic Detail
<b>FULLY OPEN</b> (Normal Operation Mode)	Up to 30 db Dnt Rw Up to 30 db Dne W
<b>CLOSED</b>	Up to 42.5 db Dnt Rw Up to 42 db Dne W

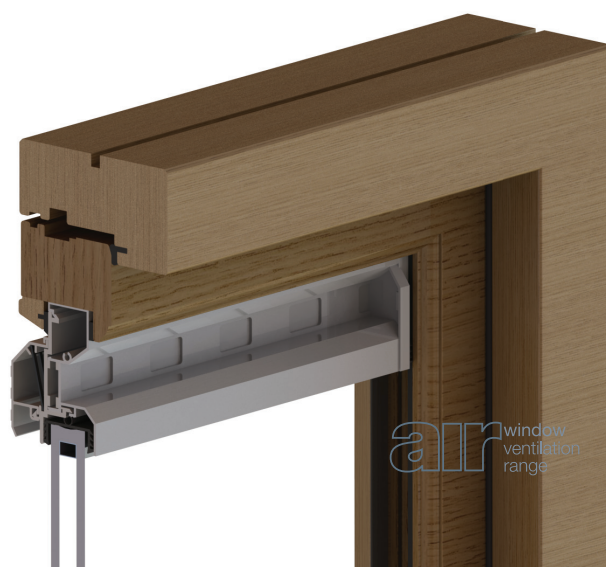
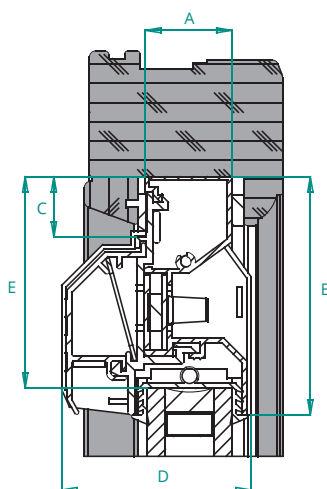
Acoustic test data available upon request

## Cross Section Dimensions

### Thermal Break

<b>A</b> (Glass Thickness)	<b>28</b>
<b>B</b> (Overall Height)	79
<b>C</b> (Rebate Depth)	20
<b>D</b> (Overall Width)	63
<b>E</b> (Glass Height Reduction)	70

Dimensions in mm



**BROOKVENT**

# airvent

**PD**

A slim-line and robust Glazed-In vent particularly suited to sliding window and door applications



Internal Face 








Internal Face 




## Features

- Slim-line external hood
- Insect grille (excl. Gas Option)
- Manufactured from extruded aluminium (vent body)
- Polyester powder coated
- 10 Year Guarantee
- uPVC Hood

## Options

-  Manual Control
-  Cord Control (Right or Left hand)
-  Bespoke Sizes
-  Bar Length
-  Upward Deflector
- FC** Fully Controllable Ventilation
-  Concealed Trickle Ventilation
-  Permanently Open Ventilation
-  Gas Regulation Vent

## Colours

-  White (HIPCA) RAL 9910 "Semi-gloss"
-  Black RAL 9005 "Semi-gloss"
-  Mill Finish (Vent Body Only)

Bespoke Colours and Finishes Available  
(Vent Body Only)

## Unit sizes (Glass Thickness)

Available in 24mm and 28mm

## Sizing Guidelines

Whilst the Brookvent range of Glazed-in Window Ventilators has been designed to suit all window systems, Brookvent strongly advise a test installation be carried out. This test should:

- Check that the correct glass reduction has been applied
- Ensure that sufficient working clearance remains to successfully fit the glazing beads

Please note that the overall ventilator width is usually the same as the glass unit width.

## Airflow Guide

Glass Thickness	Option	Equivalent Area/Metre	Length for 2500 EA	Length for 5000 EA	Geometric Open Area/Metre
24mm	PD Fully Controllable	8332	300mm	600mm	8884
24mm	PD Fully Controllable Upward Deflector	7324	341mm	683mm	8884
24mm	PD Concealed Trickle	8696	287mm	575mm	9344
24mm	PD Concealed Trickle Upward Deflector	7294	343mm	685mm	9344
28mm	PD Fully Controllable	8552	292mm	585mm	8884
28mm	PD Fully Controllable Upward Deflector	7262	344mm	689mm	8884
28mm	PD Concealed Trickle	8920	280mm	561mm	9344
28mm	PD Concealed Trickle Upward Deflector	7435	336mm	672mm	9344

☰ Bespoke sizes available

## Air Permeability

50 Pa 1.7 l/s (Closed Position)

Tested to BS EN 13141-1

## Water Tightness

Pressure @ No Leakage 150 Pa

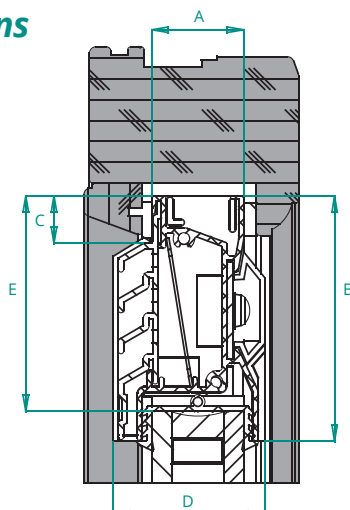
Tested to BS EN 13141-1

## Cross Section Dimensions

### PATIO DOOR

A (Glass Thickness)	24 28
B (Overall Height)	75 75
C (Rebate Depth)	15 15
D (Overall Width)	43 47
E (Glass Height Reduction)	65 65

Dimensions in mm



## Glass Height Reduction (Guide Only)

For 24mm (Glass Thickness) the normal glass height reduction is 65mm for a 15mm rebate, to give a 12mm maximum glazing depth. If the rebate exceeds 15mm then the glass height should be reduced in proportion (e.g. 22mm rebate = 72mm reduction).

The 28mm (Glass Thickness) option may differ due to a 5mm height increase to the ventilator head detail (i.e. glass height reduction of 70mm). This allows for greater penetration into the window rebate without necessarily increasing the glass reduction.'

## Bar Length

Internal face 3.7m

## Acoustics

Under normal conditions the airvent PD Standard achieved the following Sound Reduction results:

Position	Acoustic Detail
<b>FULLY OPEN</b> (Normal Operation Mode)	Up to 27 db Dnt Rw Up to 31 db Dne W
<b>CLOSED</b> (Concealed Trickle)	Up to 37 db Dnt Rw Up to 37 db Dne W
<b>CLOSED</b>	Up to 38 db Dnt Rw Up to 40 db Dne W

Acoustic test data available upon request



**BROOKVENT**

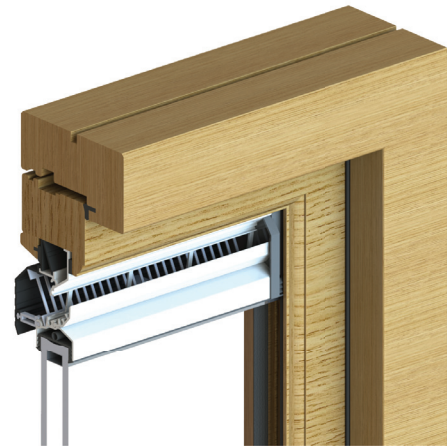
gasvent

Glazed In





Gasvent PD



Gasvent DG 1500

## gasvent PD

- Permanently Open
- Upward deflector
- Bespoke Sizes
- Bar Length
- Suitable for Glass Thickness of 24mm or 28mm

## gasvent DG 1500

- Permanently Open
- Natural upward deflector
- Insect Grille (Gas regulation)
- Bespoke Sizes
- Suitable for Glass Thickness of 24mm or 28mm

### Air Supply

**Size A** - 4000mm<sup>2</sup>/m  
Geometric Open Area

**Size B** - 7500mm<sup>2</sup>/m  
Geometric Open Area

**Size C** - 11000mm<sup>2</sup>/m  
Geometric Open Area

### Boiler Input

Up to 15kW\*  
(51000 BTU/h)

Up to 22kW\*  
(75000 BTU/h)

Up to 29kW\*  
(99000 BTU/h)

### Minimum Corresponding Vent Glazing Length

	Size A	Size B	Size C
<b>PD</b>	365mm	575mm	795mm
<b>DG1500 (6000 mode)</b>	765mm	-	-
<b>DG1500 (8000 mode)</b>	585mm	1045mm	-
<b>DG1500 (14000 mode)</b>	340mm	585mm	830mm

### \* Boiler Input Calculation's

These Calculations are provided as a guide only, please refer to a qualified gas professional for full guidance in complying with BS 5440-2 : 2009.

### Gasvent Labels

Each gas ventilator is provided with a label as standard. The label relates to the minimum open area for the length of the vent. These labels are displayed prominently on the internal body of the vent.









[brookvent.co.uk](http://brookvent.co.uk)

VERSION 1

# **BROOKVENT**

Brook House  
Dunmurry Industrial Estate  
Dunmurry  
Belfast  
BT17 9HU

**T** +44 (0)28 9061 6505  
**F** +44 (0)28 9061 6518  
**E** [orders@brookvent.co.uk](mailto:orders@brookvent.co.uk)

Design by The Design Factor